

Dec. 25-28, 2004 将来計画シンポ 東大

サイエンス班 (AGN) 理論シミュレーションから 探るAGN形成史と構造

和田桂一

(National Astronomical Observatory of Japan)

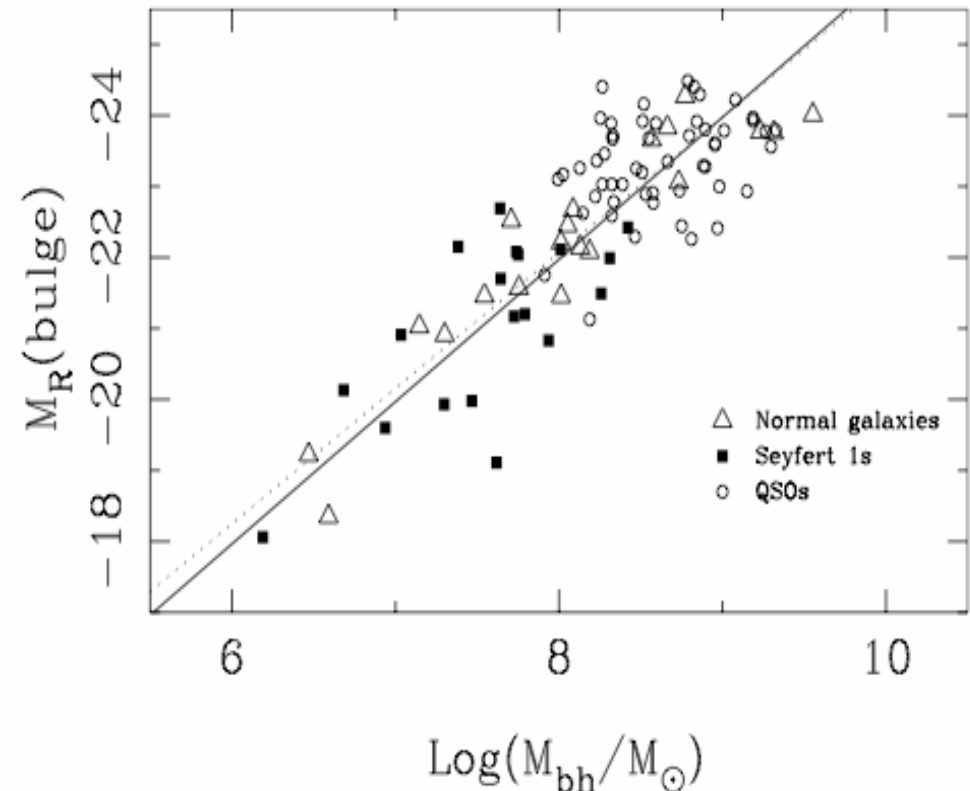
Collaborators:

富阪幸治、斎藤貴之 (NAOJ)

川勝望 (SISSA, Trieste)

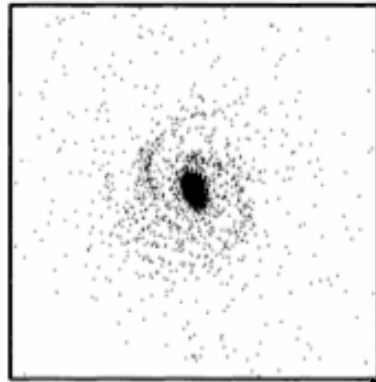
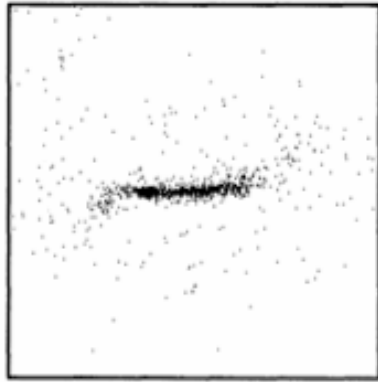
$M_{\text{BH}}-M_{\text{bulge}}$ correlation

- Galaxy formation, i.e. star formation, contributed to forming SMBH.
- But, How?
- Is this relation true at high- z ?
- Is this trend true also in smaller galaxies?
- Is the scatter in this relation intrinsic? What's the origin?



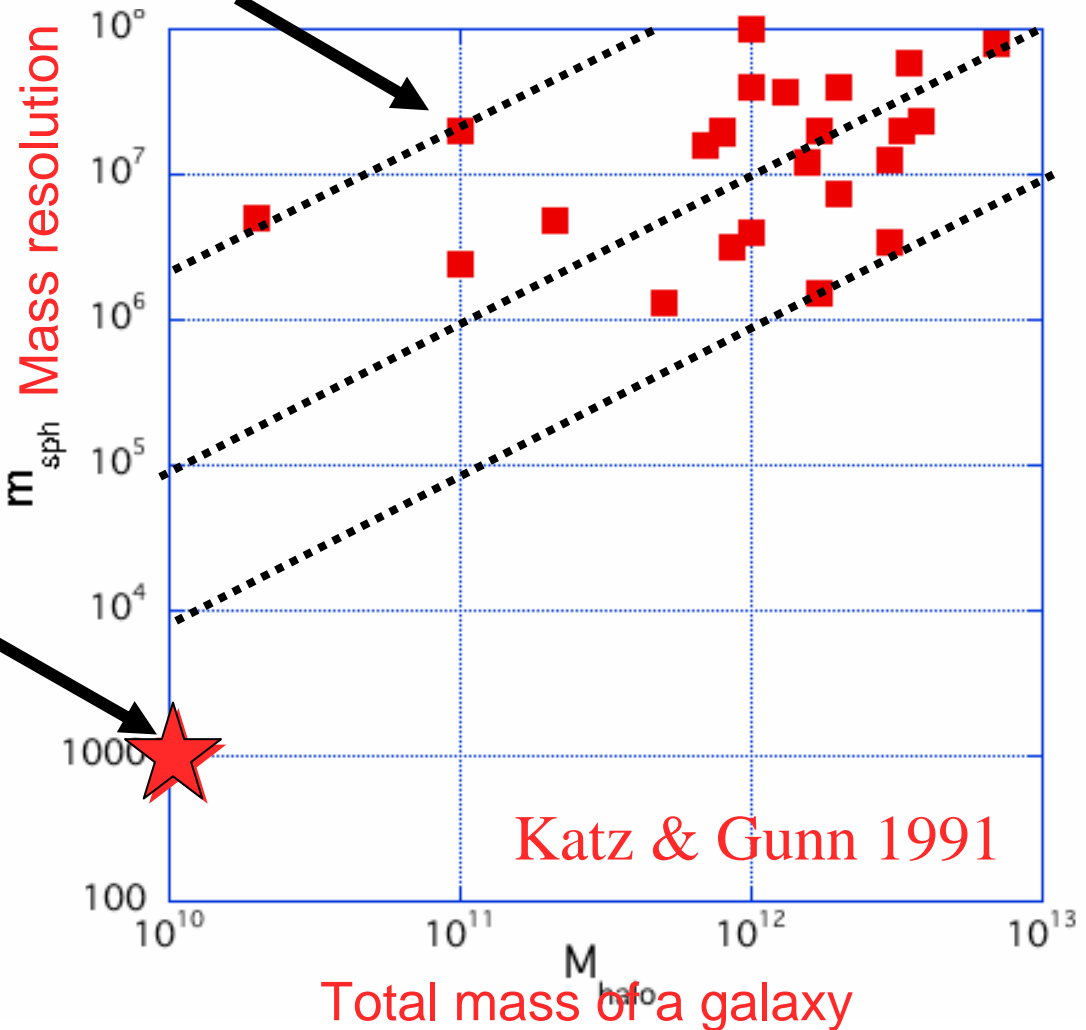
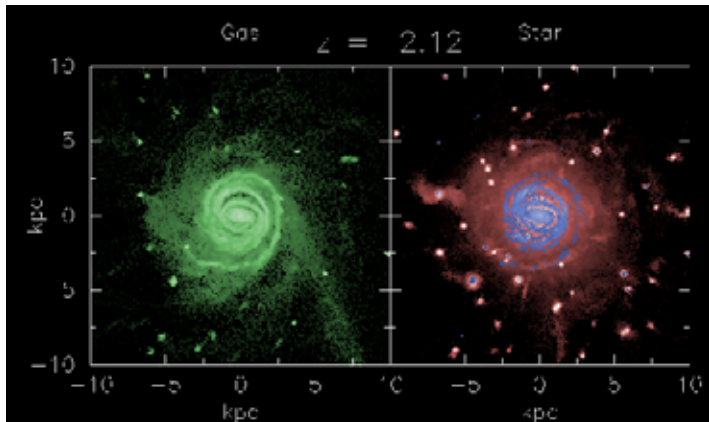
McLure & Dunlop (2002)

See also Kormendy & Richstone (1995)
Merritt & Ferrarese (2001)



Past N-body/SPH simulations of spiral galaxies formation

Saitoh et al. 2004



Formation of a small spiral galaxy

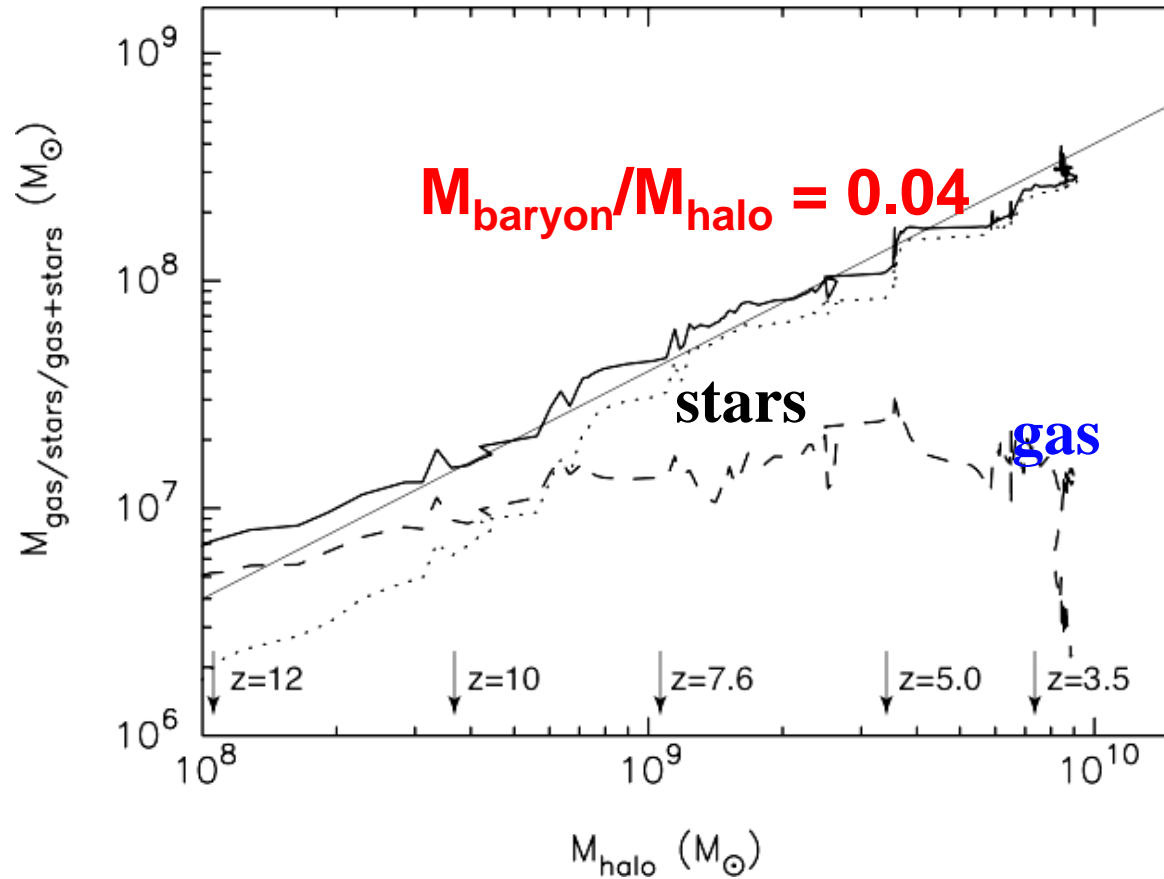
Saitoh et al. (2004)



QuickTime[®] C²
ÉrÉfÉl êLíÉvÉçÉÓÉáÉÄ
Ç™Ç±ÇÃÉsÉNÉ`ÉÉÇ¼á©ÇÉÇžÇ¼Ç...ÇÕİKónÇ-Ç ÅB

Coevolution of $M_{\text{core}}(r < 0.3 \text{ kpc})$ and M_{halo}

Saitoh & Wada (2004) ApJ 615, L93



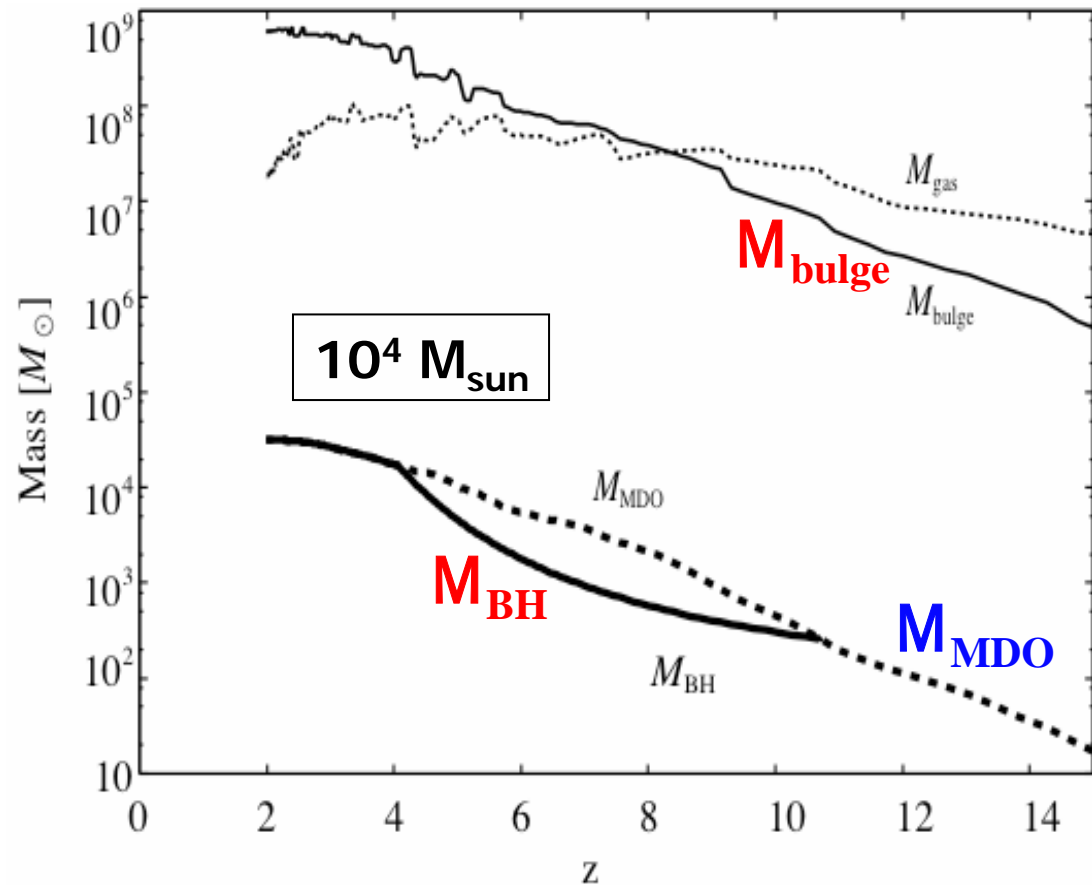
Next question: $M_{\text{BH}}/M_{\text{core}}(z) = ?$

Evolution of proto-SMBH

simulation + radiation drag model

$$dM_{\text{drag}}/dt \sim L_{\text{stars}} [1 - \exp(-\tau)]/c^2$$

- A seed BH ($260 M_{\text{sun}}$) grows with Eddington accretion rate until $M_{\text{MDO}} \sim M_{\text{BH}}$.
- An intermediate-mass BH ($10^4 M_{\text{sun}}$) can be formed by $z \sim 4$ in a forming galaxy ($M_{\text{DM}} = 10^{10} M_{\text{sun}}$)
- $M_{\text{BH}}/M_{\text{bulge}} \sim 10^{-4}$ for $z < 4$.

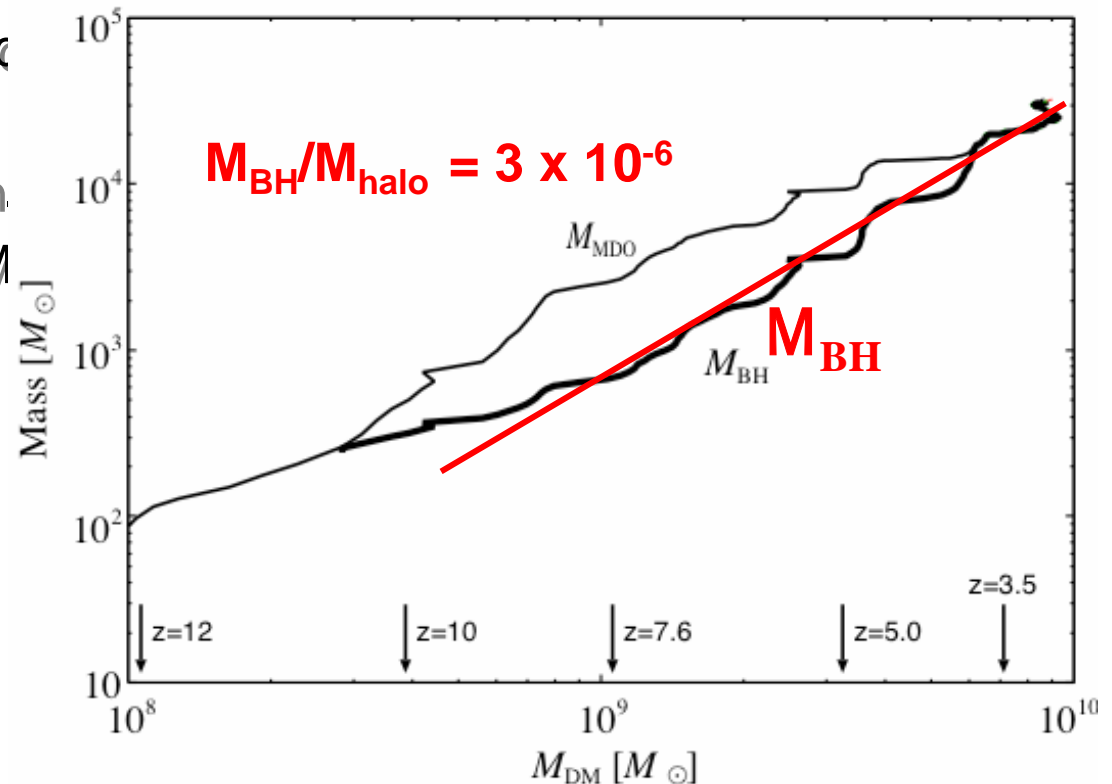


Kawakatsu, Saitoh, KW (2005)

Coevolution of M_{BH} and M_{halo}

$M_{\text{BH}}/M_{\text{halo}}$ is nearly constant from $z \sim 8$ to $z \sim 2$.

- 1) The halo grows by mergers.
- 2) Nuclear starburst is triggered
- 3) Radiation energy density increases in the core region.
- 4) Radiation drag removes A.M from the the gas.
- 5) The gas accretes to the central seed BH.



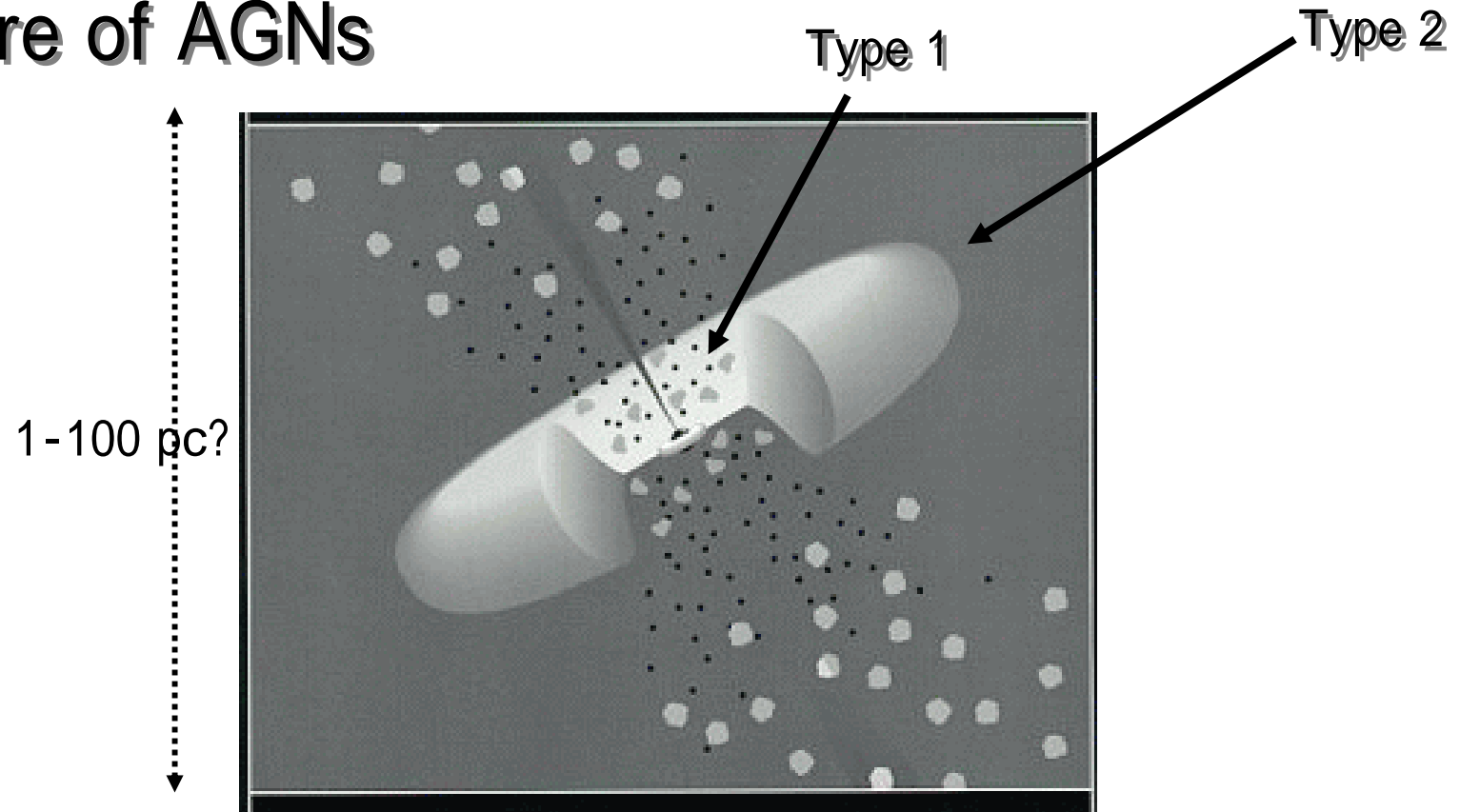
Baes et al. (2004)

$$\frac{M_{\text{BH}}}{10^8 M_{\odot}} \sim 0.11 \left(\frac{M_{\text{DM}}}{10^{12} M_{\odot}} \right)^{1.27}$$



$M_{\text{BH,max}} \sim 3 \times 10^4 M_{\text{sun}}$ at $z \sim 2$

Structure of AGNs



Super massive BH ($10^{6-8} M_{\text{sun}}$) + accretion disk (AU scale) + BLR + NLR +
Obscuring molecular torus (1-100 pc) + Jet + ENLR

Energy source: mass accretion ($0.01 - 1 M_{\text{sun}} \text{ yr}^{-1}$)

Obscuring "torus" around a supermassive BH with nuclear starburst

256² x 128, uniform grid, 0.25pc/grid

Radiative cooling (5-10⁸ K), SN feedback, selfgravity

$M_{\text{BH}} = 10^8 M_{\text{sun}}$, $M_{\text{gas}} = 10^7 M_{\text{sun}}$, SNR = 0.8 yr⁻¹

QuickTime[®]
E[®]RIE[®]ALICEVE[®]EOE[®]EA
C[®]PC[®]CAE[®]ENE EEC[®]X[®]CEC[®]X[®]XC[®] COIK[®]KVC[®]C[®]AB

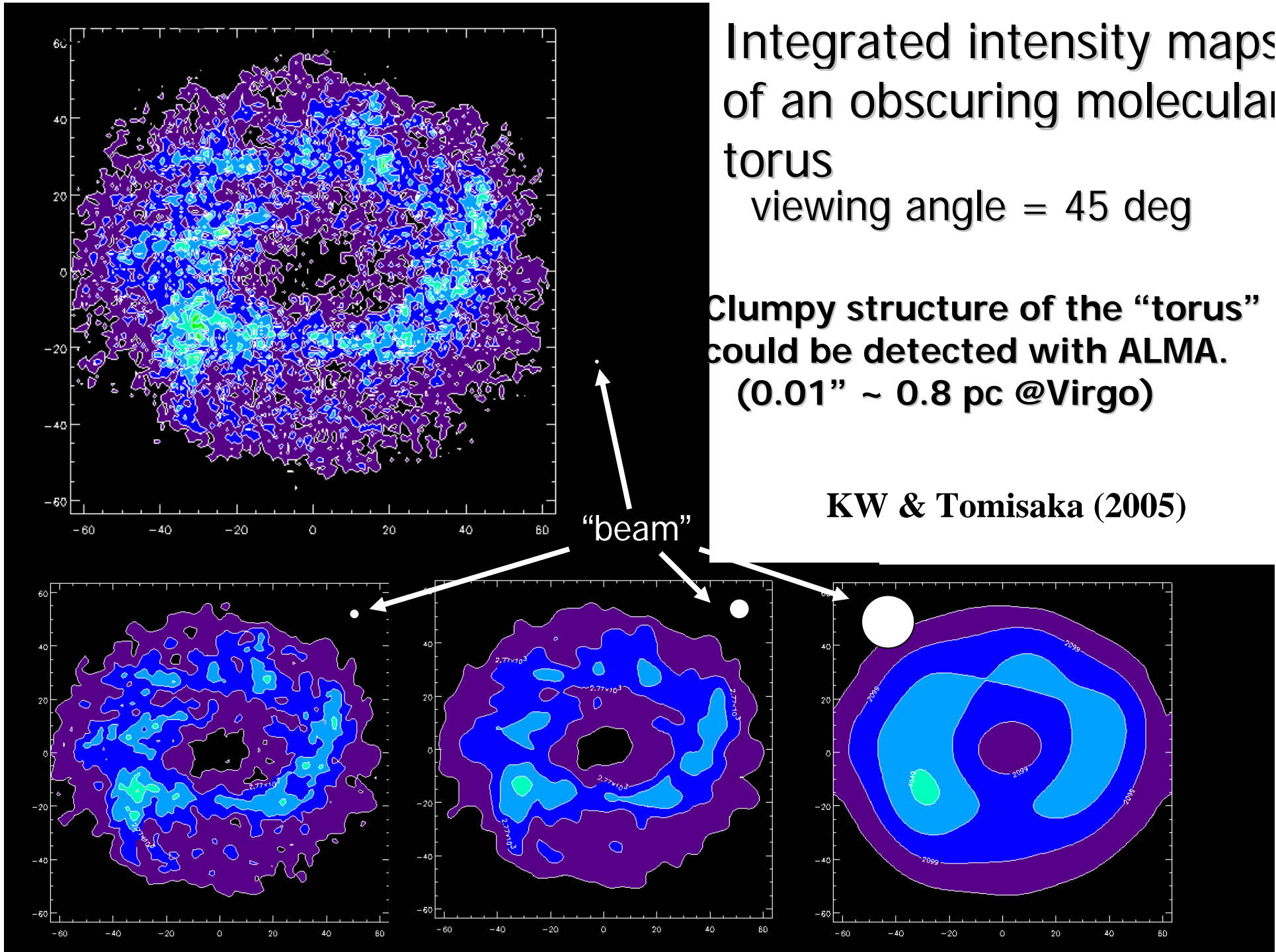


64 pc

Integrated intensity maps
of an obscuring molecular
torus
viewing angle = 45 deg

Clumpy structure of the “torus”
could be detected with ALMA.
(0.01” ~ 0.8 pc @Virgo)

KW & Tomisaka (2005)



AGNのシミュレーションによる研究の今後

- 銀河形成と巨大ブラックホール形成

予想: $10^{-6} M_{\text{halo}}$ のIMBHが $z > 4$ に多数ある

??: BHの成長はmergingかaccretionか

- よりself-consistentに
 - 高解像度 ==> 天の川創成プロジェクト
 - 輻射輸送 ==> FIRST プロジェクト
- さまざまな条件で
 - 銀河の多様性とAGNの多様性の起源

- AGNの構造

予想: 非一様なトーラス、非定常なaccretion

??: 輝線ガス領域(BLR, NLR), jetの構造と起源

- 輻射、磁場とカップルした流体
 - 現在も限定的なモデルで進行中 (e.g. 大須賀、渡部、佐藤、町田、加藤)
- 輻射輸送計算による観測との直接比較
 - さまざまな分子輝線, continuum